

Monday 02/12	Tuesday 02/13	Wednesday 02/14	Thursday 02/15	Friday 02/16
	Black Parent Affinity Group 6-7PM	Food Pantry 12-1PM PTA Meeting 6-7PM	Field Trip for BSU and Advanced Art-Portland Art Museum	
Monday 02/19	Tuesday 02/20	Wednesday 02/21	Thursday 02/22	Friday 02/23
There will be classes. This is no longer a holiday for students.		Cafe Latina 9:30-11AM Food Pantry 12:00PM Staff v Student Volleyball Game 2:45p-3:45pm		Field Trip -LUCHA & Cafe Latina

Vision to Learn is a wonderful new partner who will be here this week to follow up with our George students who will receive an eye exam and pick out their pair of Warby Parker glasses. This is at no cost to our students and families and they will be serving over 70 students.

See below for more information about this week’s **Black Parent Affinity Night** and **Wednesday’s PTA meeting**.

As required by the Oregon Department of Education, we are providing you with the 30 Day Notice and Opt Out Form for Statewide Assessments in English Language Arts and Mathematics. The notice is available in English, Spanish, Vietnamese, Chinese, Russian and Somali on the PPS Research, Assessment, and Accountability website.

Statewide testing is part of our balanced assessment system that offers all students, especially historically underserved students, opportunities to demonstrate their progress. Information provided by student assessments is critical in helping us determine district and school priorities for improving student learning.

If you have questions, please contact your school office.



We've had lots of celebrations for our students recently. In addition to the dance and assembly we had our Honor Roll Breakfast this past Wednesday. Leadership students helped serve our guests of honors and their families. Our winning house, Red, was honored for earning the most points during the second quarter with an ice cream party. Finally, our cafeteria student workers were celebrated on Friday with a pizza and ice cream party as a thank you for all their help in keeping the kitchen running smoothly.

Our music program held their first concert this past week on Thursday night. The Choir, Beginning Band, Advanced Band, Beginning Orchestra and Advanced Orchestra performed in front of a full house! Stolz, Ms. Lemen and Ms. Sarah organized a beautiful night of music for our community. A big shout out to them, and all the community members that showed up to honor the teacher's and student's hard work.



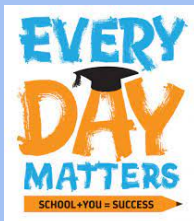
On the Horizon:

Staff vs. Students Volleyball game 2/28/24

BSU night 2/29/24

8th Grade U of O field trip 3/12/24 @ 7:45 am

GMS Got Talent 3/21/24



If your student is coming to class late regularly, they may be on our Tardy Data Intervention. With this intervention, we track their tardies and skips. Ideally, we will see improvement and the student will be off of tardy tracking. If the student does not improve, then they may end up with a disciplinary consequence or placed on our no hall pass list. You will know your student is on our tardy intervention because we will mail a letter home. If you have additional questions please contact our attendance monitor [Patrice Farber](mailto:Patrice.Farber@pps.net) - pfarber@pps.net

Thank you for all the parent support in getting your students to school- We are ready for a fresh start after all of the "breaks" from school this year!



During Advisory, students have been researching a Black artist from Oregon to celebrate Black History Month. This project is influenced by and in collaboration with the Portland Art Museum's Black Artists of Oregon exhibit. Advisory classes are working collaboratively to create a door design inspired by the artist they selected. See slides from the advisory lesson [here](#).

8th Grade Families:

Roosevelt counselors visited George on 2/2 to help 8th graders forecast for high school classes. If your student didn't forecast, please reach out to the 8th grade counselor Mack: mmagee@pps.net or call 503-916-6262. Review elective class options [here](#) or at [Roosevelt's website](#).

George has been partnering with the University of Oregon to provide all 8th

graders with information about college. All 8th graders are invited to attend a University of Oregon Campus visit on **March 12th!** Stay tuned for more details.



BREAKING NEWS!!! Effective Immediately, families can sign up for George SUN School at the following link: <https://app.grouprail.com/signin/22118> Winter programming started Tuesday, January 8th. You can start at any time.

One of the many things that SUN does is help families connect to school and share their own knowledge and expertise with our school community. If you are interested in volunteering at George, or in any PPS School, the steps to becoming a volunteer can be found [HERE](#).

The George SUN Site Manager is always available for you to reach out to. Her name is Jenni Brown. Her phone number is 971 386-4045 - you can call or text. Her email address is JenBrown@pps.net.

¡¡¡NOTICIAS DE ÚLTIMA HORA!!! Con vigencia inmediata, las familias pueden inscribirse en la escuela George SUN en el siguiente enlace: <https://app.grouprail.com/signin/22118>

La programación de invierno comenzó el martes 8 de enero. Puedes empezar en cualquier momento.

Una de las muchas cosas que hace SUN es ayudar a las familias a conectarse con la escuela y compartir su propio conocimiento y experiencia con nuestra comunidad escolar. Si está interesado en ser voluntario en George o en cualquier escuela de PPS, puede encontrar los pasos para convertirse en voluntario [AQUÍ](#).

El administrador del sitio de George SUN siempre está disponible para que usted se comunique con él. Su nombre es Jenni Brown. Su número de teléfono es 971 386-4045 (Está bien enviarme un mensaje de texto en español); puedes llamarla o enviarle un mensaje de texto. Su dirección de correo electrónico es JenBrown@pps.net.

SUN has ESL Classes Tuesdays at 5 pm and Wednesday at 10 am for an hour. Join us!

SUN tiene clases de ESL los martes a las 5 pm y los miércoles a las 10 am por una hora. ¡Únete a nosotros!

CLASES DE ESL

martes a 5 pm
miércoles a 10 am
a partir del 28 de noviembre

A George Middle School
10000 N Burr
Portland, Oregon 97203

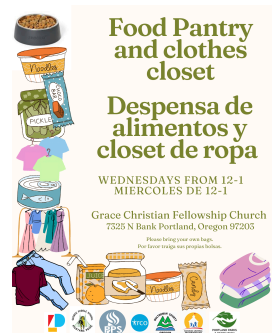
ESL CLASSES

Tuesdays at 5 pm
Wednesdays at 10 am
Starting November 28

At George Middle School

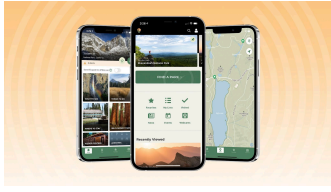
We also run a weekly food pantry at the blue church across the street on Wednesdays from 12-1.

También tenemos una despensa de alimentos semanal en la iglesia azul al



otro lado de la calle los miércoles de 12 a 1.

FAMILY TECH

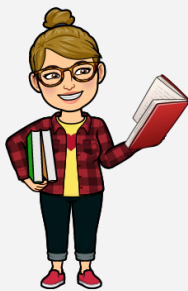


On Tuesday, February 13, our Technology Coach will attend the Black Parent Night meeting. She will be there to discuss all things technology. We can talk about how students use technology at school. We can talk about how parents can use technology to stay connected to George.

Hope to see you all there!



VOLUNTEER



GMS Library and Literacy News

Library visits are happening every other week through Language Arts, Reading Support, and our ISC classes! Most students will visit to check out a book for independent reading every two weeks, but some will get to come once per week to really invest in their reading practice. For more information about our library check out [our GMS Library website!](#)

VOLUNTEERS NEEDED! We could use your help with straightening up, organizing, and making our library feel clean and welcoming. If you have an hour or more per week please contact Ms. B. No experience necessary! Additionally, we could use one or more adults to volunteer in Lake Oswego for our regional Battle of the Books tournament on March 16th. Experience with OBOB would be a huge asset to the organizers, but anyone is welcome! Ms. B can be reached by email at mblount@pps.net or in the library at school for more details.

As February begins we are reminding students and staff that books and literacy are an important point of celebrating Black voices and experiences throughout Black history up to the present day. We will celebrate with book displays, First Chapter Friday readings, and more! 2023 was a big year for our library here at GMS. Take a look at our stats, and top book checkouts:

2023 LIBRARY STATS

GEORGE STUDENTS & STAFF
CHECKED OUT:

3,853 Books!

1,857 books from this
school year alone!
Way to go GMS readers!

GMS' TOP 10 BOOKS OF 2023

BOOKS WITH THE MOST
CHECKOUTS FOR 2023





If you don't have plans for Valentine's Day this year please join us for our February meeting from 6:00-7:30 in the library. We'll be discussing doing another big Spring grounds clean up event and our upcoming social for our adult community March 6th from 6:00-9:00 at the Fixin' Too. We'll have music from a George parent and his band, a raffle and time to socialize with other community members! We're hoping to also find someone to do Karaoke so please let us know if you know someone.

Interested in ordering a sweatshirt (\$25) or a T-shirt (\$15) to show your GMS pride?!?! If so email georgemustangpta@gmail.com and get yours today!!



PIL Roosevelt Youth Winter Sport Schedules:

PIL Roosevelt Youth Track and Field registration is open! Please register now at:

<https://students.arbitersports.com/programs/roosevelt-youth-sports-registration-spring-2024>

Track and Field is for everyone. We run, jump, throw, hurdle, and have a great time together on road trips! We expect 150 student athletes to come join us this season. Come check it out March 11, 2024!

Please email jvega@pps.net with any inquiries.

CAFÉ
LATINA



This month, Cafe Latina had their first Nutrition class with Vera from (OSU) Oregon State University. We learned two recipes on how to cook with Mushrooms and Baked Apples with Squash. See the link below for the recipe.

<https://foodhero.org/es/magazines/hongos>

Este mes Café Latina tuvo su primer clase de nutrición con Vera de (OSU) de la Universidad del Estado de Oregon aprendimos dos recetas una como cocinar con Hongos y Manzanas con calabazas horneadas. Mirar el enlace para la receta.

<https://foodhero.org/es/magazines/hongos>

Cafe Latina will be having their meetings the 3rd Wednesday of the month. Our next meeting will be on **Febrero 21 2024 at 9:30 am.**

For questions send an email to Maria Elena at malvarad@pps.net

Or call at 971-710-6366 or 503 916-6262 Option # 5.

¡Everybody is welcome!

Cafe Latina tendrá sus reuniones el 3rd Miércoles de cada mes. Nuestra próxima reunión será en **Febrero 21 2024 a las 9:30 am.**

Para preguntas envíe un correo electrónico a Maria Elena

malvarad@pps.net o llame al 971-710-6366 o 503 916-6262 opción #5.

¡Todos son bienvenidos! ¡Gracias a todas/os los que estuvieron presentes!

Here is the latest PPS 2023-2024 Student Rights and Responsibilities Handbook. This Handbook is what we use to guide our discipline processes to determine behavior offenses and possible responses. There are hardcopies in the main office and you can download the handbook [HERE](#):

[English](#) [español](#) [Soomaali](#) [中国人](#) [Русский](#) [Tiếng Việt](#)